



OAKFIELD



Danum Close, Hailsham, BN27 1UX

£1,200 Per Calendar Month





## Danum Close, Hailsham, BN27 1UX

This two bedroom semi-detached bungalow is situated in North Hailsham and would make a great home for a couple or small family.

As you enter the property you are greeted by the front porch which is forever useful for hanging coats and storing shoes. The living room is opened out nicely by the large bay window and is given plenty of character by the feature fireplace and brick effect wallpaper.

The kitchen is located to the rear with access to the garden and carries a modern style with shaker style units with new oven and hob - there is plenty of worktop and storage space here.

Both bedrooms are double sizes with Bedroom One being a large double and Bedroom Two being a smaller double. The master bedroom includes built in storage and overlooks the front garden.

The property also benefits from a wet room with shower, wc and hand basin.

Please Note :  
Pets considered!  
An annual household income of £36,000 is required to meet the affordability criteria for this property.  
The minimum term length for this property is 12 months.







#### Kitchen

9'1" x 7'6" (2.79 x 2.31)

#### Lounge / Diner

18'9" x 7'7" (5.72 x 2.33)

#### Bedroom One

14'7" x 11'8" (4.45 x 3.56)

#### Bedroom Two

10'9" x 7'6" (3.28 x 2.31)

#### Shower Room

7'6" x 5'5" (2.31 x 1.66)

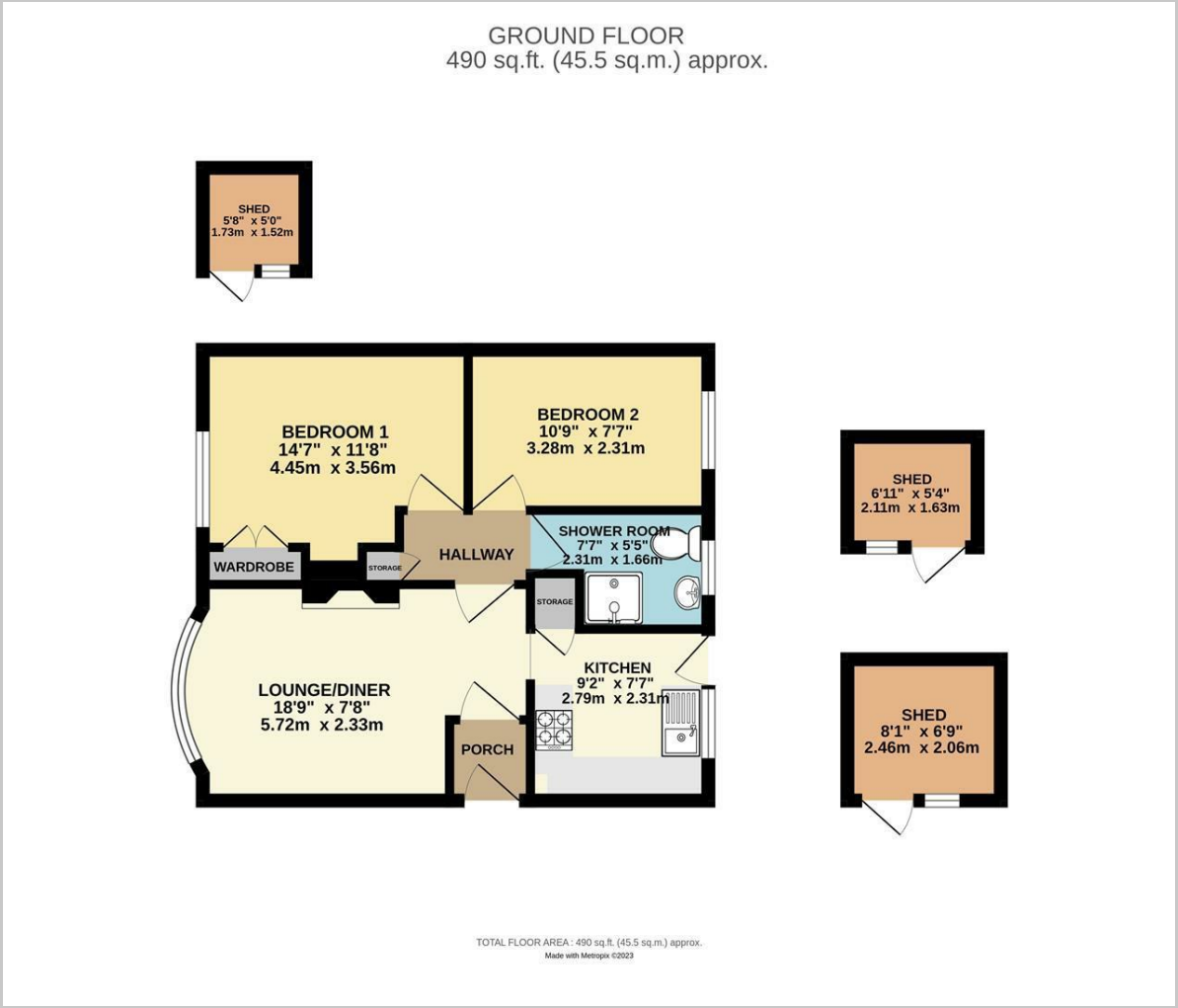
#### Three Sheds for Outdoor Storage

Council Tax Band B - £1932





Floor Plan

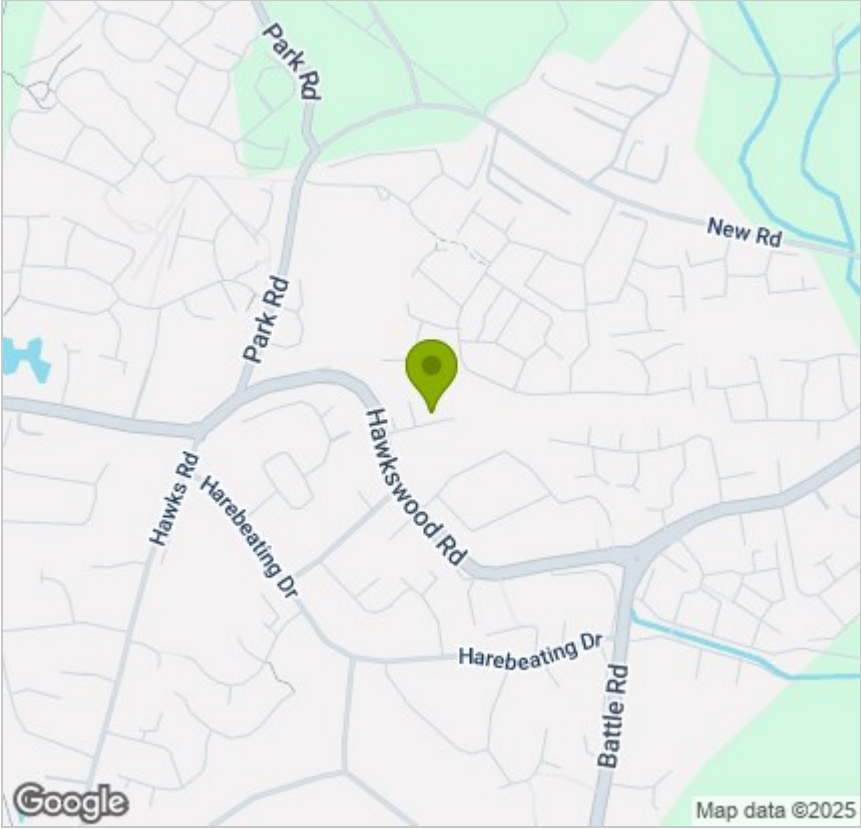


Viewing

Please contact us on 01323 405553  
if you wish to arrange a viewing appointment for this property or require further information.

These particulars, whilst believed to be accurate are set out as a general outline only for guidance and do not constitute any part of an offer or contract. Intending purchasers should not rely on them as statements of representation of fact, but must satisfy themselves by inspection or otherwise as to their accuracy. No person in this firms employment has the authority to make or give any representation or warranty in respect of the property.

Area Map



Energy Efficiency Graph

